

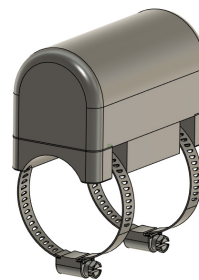
Handbrake Engagement Sensor

BS 06 24 mounting on the axle

THIS WIRELESS SENSOR DETECTS ACTIVATION AND DEACTIVATION OF THE HANDBRAKE. IT PROVIDES CONTROL THAT HELPS PREVENT THE RISK OF ACCIDENTS AND DAMAGE TO BRAKING COMPONENTS.

USAGE AND CHARACTERISTICS

- » Wireless sensor with Bluetooth® technology
- » Part of Smart Wagon® Solution
- » Detects activation | deactivation of the handbrake
- » Mounting on the axle using clamping brackets
- » Measures and sends values to the main GPS unit, data from sensor are visible at the time of the main GPS unit communication (depends on pre-selected interval)



TECHNICAL PARAMETERS

ANTENNA	RF	Internal	
BATTERIES	Type and capacity	Li-SOCl2 - primary	14 Ah
	Battery life	Minimum 10 years non-replaceable	
SENSORS	3-axis accelerometer 3-axis gyroscope	Activation deactivation of handbrake	
	Temperature sensor	-35 °C up to 85 °C, +/- 0,5 °C	
	Vibration sensor	8 g	
RF SENSOR INTERFACE	Frequency	2,4 GHz	
	Type	Bluetooth, BT 5.0	
	Range	Up to 50 m	
	Data sending period - default	2 s	
DIMENSIONS	Plastic box	85 x 43 x 40 mm	
TEMPERATURE RANGE		-35 °C up to 85 °C	
PROTECTION CLASS	IP68	Waterproof Encapsulated for protection in harsh environments	
WEIGHT	With batteries	200 g	
ACCESSORIES	BS 06 19	Status Indicator Panel	