

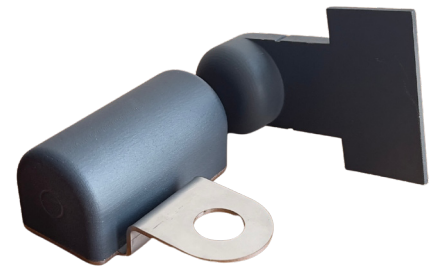
# Loading & Bearing Condition Sensor

## BS 06 03

THIS WIRELESS SENSOR DETECTS RAIL CAR LOAD STATUS, BEARING BOX OVERHEATING AND FLAT WHEEL. MEASURES AND SENDS VALUES AT SET INTERVALS TO THE MAIN GPS MONITORING UNIT.

### USAGE AND CHARACTERISTICS

- » Wireless sensor with Bluetooth® technology
- » Part of Smart Wagon® Solution
- » Temperature & magnetic & vibration sensor
- » Measures vibration and detects flat wheel + sends alerts
- » Calibration is required during installation for load status functionality
- » Measures and sends values to the main GPS unit, data from the sensor are visible at the time of the main GPS unit communication (depends on pre-selected interval)



### TECHNICAL PARAMETERS

<b>ANTENNA</b>	RF	Internal	
<b>BATTERIES</b>	Type and capacity	Li-SOCl2 - primary	14 Ah
	Battery life	Minimum 10 years   non-replaceable	
<b>SENSORS</b>	Magnetic sensor - Load sensor	5 mT, +/- 2 %	
		Measures distance from 30 to 150 mm	
	Temperature sensor	-35 °C up to 85 °C, +/- 0,5 °C	
	Vibration sensor	8 g	
<b>RF SENSOR INTERFACE</b>	Frequency	2,4 GHz	
	Type	Bluetooth, BT 5.0	
	Range	Up to 50 m	
	Data sending period - default	2 s	
<b>DIMENSIONS</b>	Plastic box (without metal holder)	85 x 43 x 40 mm	
<b>TEMPERATURE RANGE</b>		-35 °C up to 85 °C	
<b>PROTECTION CLASS</b>	IP68	Waterproof   Encapsulated for protection in harsh environments	
<b>WEIGHT</b>	With batteries (without metal holder)	200 g	