

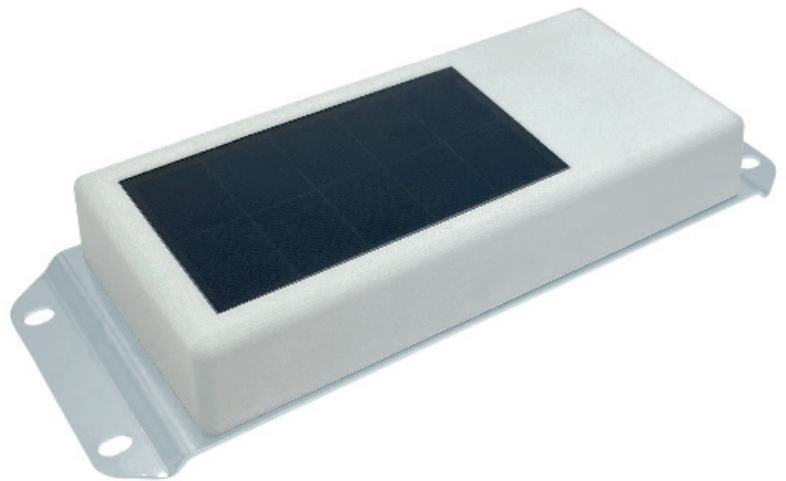
# TotalFinder X

INDUSTRIAL GPS DEVICE FOR LONG-TERM MONITORING WITH SOLAR CHARGING AND EASY INSTALLATION BY MAGNETIC PAD OR PLATE HOLDER

## USAGE AND CHARACTERISTICS

Device is designed to monitor rail cars, containers, machinery and construction equipment, trailers and caravans.

- » Localization and tracking according to preset time interval
- » Temperature, speed, vibration and tilt monitoring
- » G-shock detection
- » Bluetooth 5.0 long range for external sensors (optional)
- » Easy installation by magnetic pad or plate holder
- » Solar panel charging
- » 4G IoT / 2G



## MEASURES AND TRANSMITS

- » Position via GNSS (GPS , Glonass, Galileo, Beidou)
- » GSM cell ID and signal strength
- » Speed and direction of movement
- » Temperatures
- » Tilting and removal detection
- » G-shock detection
- » Battery voltage and status
- » Up to 10 external BT 5.0 sensors can be connected

## TYPES AVAILABLE\*

TYPE	GSM	BATTERY	CHARGING	LONG RANGE RECEIVER
<b>TFX 370 002</b>	4G IoT / 2G	Li-Ion 15 000 mAh	Solar panel	-
<b>TFX 372 002</b>	4G IoT / 2G	Li-Ion 15 000 mAh	Solar panel	Bluetooth 5.0

\*for customized solutions please feel free to contact us

## ACCESSORIES

<b>MD TF2 002</b>	Metallic plate holder for installation with rivets
<b>MD TF3 001</b>	Magnetic pad
<b>BS 010 390</b>	BT 5.0 Temperature sensor
<b>BS 020 130</b>	BT 5.0 Robust temperature sensor
<b>BS 040 540</b>	BT door sensor
<b>BS 02 02</b>	BT sensor RAIL



# TotalFinder X

## TECHNICAL PARAMETERS

	version 4G NB-IoT/Cat M1	B1/B2/B3/B4/B5/B8/B12/B13/B18/B19/B20/B26/B28/B39
	SIM	Nano Sim, Plug-in 1.8 V (non-interchangeable)
		SimChip
	SMS	Alarm & Info SMS, SMS commands, requests, SMS configuration
	GPRS internet connectivity	Class 12/ static & dynamic IP VPN, UDP protocol / 128bit security encryption key / FW upgrade, configuration settings, on-line value reading, report memory reading, control
<b>GNSS</b>	GPS, Glonass, Galileo, Beidou	60 tracking channels, 99 acquisition channels, 210 PRN channels
<b>ANTENNAS</b>	GNSS, GSM, BT 5.0	Internal
<b>BATTERIES</b>	Type and capacity	Li-Ion 15 000 mAh charged by solar panel
<b>CONSUMPTION</b>	One Trackpoint + data sending	1 mAh / position
	Self-discharge of battery in the dark	18 mAh / day
	Solar panel gain	5 - 200 mA/h according to light intensity
<b>SENSORS</b>	3 dimensions G sensor	Movement / Tilt / Shock detection
	Other sensors	Temperature
<b>WIRELESS EXTERNAL SENSOR INTERFACE</b>	Bluetooth 5.0 long range	Range up to 100m in free space / 30m in buildings Up to 10 sensors
<b>INTERNAL MEMORY</b>	Flash 512 kB	Capacity 5000 events or positions
<b>DIMENSIONS</b>	Plastic box	177 x 85 x 25 mm
	Metallic plate holder	Length 229.78 mm, Width 88 mm
		Distance of holes: Length 218 mm, Width 55 mm Hole diameter 6.5 mm
<b>TEMPERATURE RANGE</b>	Ambient temperature	-25 °C up to +80 °C
<b>PROTECTION CLASS</b>	IP68	Waterproof
<b>WEIGHT</b>	Without magnetic pad	680 g
<b>STANDARDS</b>	EMC	EN 50121-3-2 ed.4   EN 61000-6-4:2007+A1:2011   EN 55032:2015   EN 55024:2010
	LVD	EN 62368-1:2014+A11:2017
	Climatic testing	EN 50155   EN 60068-2-2   EN 60068-2-1 ed.2   EN 60068-2-30 ed. 2
	Shock and vibration	EN 61373 ed. 2
	IP code	EN 60529