

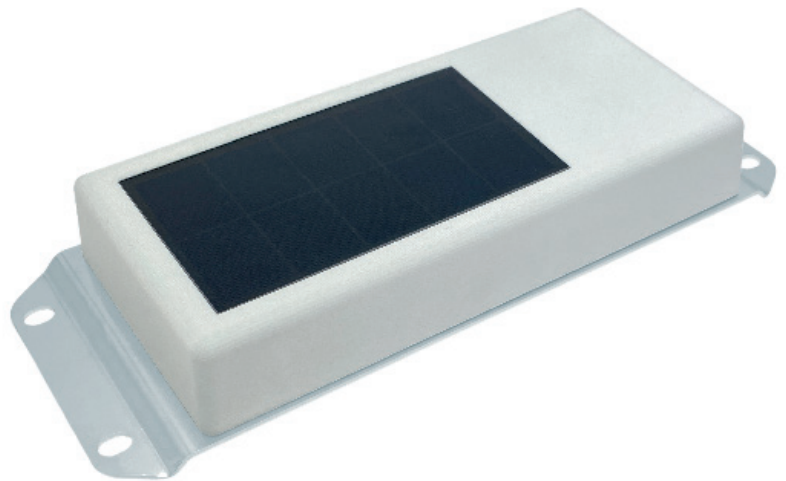
TotalFinder X

INDUSTRIAL GPS DEVICE FOR LONG-TERM MONITORING WITH SOLAR CHARGING AND EASY INSTALLATION BY MAGNETIC PAD OR PLATE HOLDER

USAGE AND CHARACTERISTICS

Device is designed to monitor rail cars, containers, machinery and construction equipment, trailers and caravans.

- » Localization and tracking according to preset time interval
- » Temperature, speed, vibration and tilt monitoring
- » G-shock detection
- » Bluetooth 5.0 long range for external sensors (optional)
- » Easy installation by magnetic pad or plate holder
- » Solar panel charging
- » 2G, 4G NB IoT | Cat M1(optional)



MEASURES AND TRANSMITS

- » Position via GNSS (GPS , Glonass, Galileo, Beidou)
- » GSM cell ID and signal strength
- » Speed and direction of movement
- » Temperatures
- » Tilting and removal detection
- » G-shock detection
- » Battery voltage and status
- » Up to 10 external BT 5.0 sensors can be connected

TYPES AVAILABLE*

TYPE	GSM	BATTERY	CHARGING	LONG RANGE RECEIVER
TFX 370 202	2G	Li-Ion 15 600 mAh	Solar panel	-
TFX 370 002	2G, 4G NB-IoT/Cat M1	Li-Ion 15 600 mAh	Solar panel	-
TFX 372 002	2G, 4G NB-IoT/Cat M1	Li-Ion 15 600 mAh	Solar panel	Bluetooth 5.0

*for customized solutions please feel free to contact us

ACCESSORIES

MD TF2 002	Metallic plate holder for installation with rivets
MD TF3 001	Magnetic pad
BS 010 390	BT 5.0 Temperature sensor
BS 020 130	BT 5.0 Robust temperature sensor
BS 040 540	BT door sensor
BS 100 001	Sensor for rail car load and bearing condition



TotalFinder X

TECHNICAL PARAMETERS

GSM	version 2G	850/900/1800/1900 MHz
	version 4G NB-IoT/Cat M1	B1/B2/B3/B4/B5/B8/B12/B13/B18/B19/B20/B26/B28/B39
	SIM	Nano Sim, Plug -in 1.8 V (non-interchangeable)
		SimChip
	SMS	Alarm & Info SMS, SMS commands, requests, SMS configuration
GPRS internet connectivity	Class 12/ static & dynamic IP VPN, UDP protocol / 128bit security encryption key / FW upgrade, configuration settings, on-line value reading, report memory reading, control	
GNSS	GPS , Glonass, Galileo, Beidou	60 tracking channels, 99 acquisition channels, 210 PRN channels
ANTENNAS	GNSS, GSM, BT 5.0	Internal
BATTERIES	Type and capacity	Li-Ion 15 600 mAh charged by solar panel
CONSUMPTION	One Trackpoint + data sending	1 mAh / position
	Self-discharge of battery in the dark	18 mAh / day
	Solar panel gain	5 - 200 mA/h according to light intensity
SENSORS	3 dimensions G sensor	Movement / Tilt / Shock detection
	Other sensors	Temperature
WIRELESS EXTERNAL SENSOR INTERFACE	Bluetooth 5.0 long range	Range up to 100m in free space / 30m in buildings Up to 10 sensors
INTERNAL MEMORY	Flash 512 kB	Capacity 5000 events or positions
DIMENSIONS	Plastic box	177 x 85 x 25 mm
TEMPERATURE RANGE	Ambient temperature	-25 °C up to +80 °C
PROTECTION CLASS	IP68	Waterproof
WEIGHT	Without magnetic pad	680 g
STANDARDS	EMC	EN 50121-3-2 ed.4 EN 61000-6-4:2007+A1:2011 EN 55032:2015 EN 55024:2010
	LVD	EN 62368-1:2014+A11:2017
	Climatic testing	EN 50155 EN 60068-2-2 EN 60068-2-1 ed.2 EN 60068-2-30 ed. 2
	Shock and vibration	EN 61373 ed. 2
	IP code	EN 60529