

TotalFinder Solar

UNIVERSAL GPS MONITORING UNIT WITH SOLAR-CHARGED HIGH CAPACITY BATTERY FOR UNLIMITED TRACKING

USAGE AND CHARACTERISTICS

Device is designed to monitor railway wagons, containers, machinery and construction equipment, trailers and caravans.

- » Tracking at preselected time interval
- » Monitoring of temperature, acceleration, vibration and tilting
- » G-shock event reporting
- » Bluetooth 5.0 long range for external Sensor (optionally)
- » Easy installation by extremely strong magnets
- » Special holder for secure installation available
- » Ultra sensitive solar panels
- » NB IoT and Cat M1 connectivity (optionally)



MEASURES AND TRANSMITS

- » Position via GNSS (GPS, Glonass, Beidou)
- » GSM cell ID and signal strength
- » Speed and direction of movement
- » Temperature, altitude
- » Tilting - removal detection
- » Battery voltage and status
- » G-shock event reporting
- » Up to 10 values of external long range BT 5.0 sensors

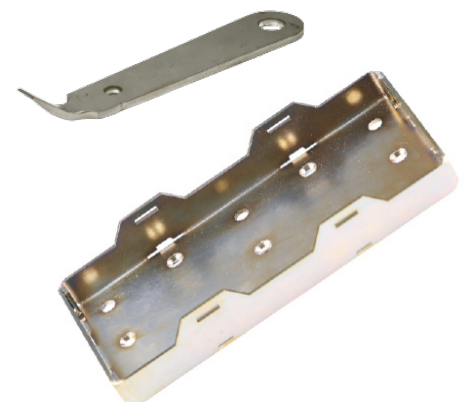
TYPES AVAILABLE*

TYPE	GSM	BATTERY	CHARGING	LONG RANGE RECEIVER
TF 170 202	2G	Li-Ion 15 000 mAh	Solar panels	-
TF 170 002	4G NB-IoT/Cat M1	Li-Ion 15 000 mAh	Solar panels	-
TF 172 002	4G NB-IoT/Cat M1	Li-Ion 15 000 mAh	Solar panels	Bluetooth 5.0

*for customized solutions please feel free to contact us

ACCESSORIES

MD TF1 002	Robust metal holder for secure fixing (protected by patent)
MD 092 001	Special tool for releasing the unit from holder
BS 010 390	BT temperature sensor
BS 020 130	BT robust temperature sensor
BS 030 380	BT access card
BS 040 540	BT door sensor



TotalFinder Solar

TECHNICAL PARAMETERS

GSM	version 2G	850/900/1800/1900 MHz
	version 4G NB-IoT/Cat M1	B1@2100MHz, B3@1800MHz, B8@900MHz, B5@850MHz, B20@800MHz, B28@700 MHz
	version 4G LTE Cat M1 / NB-IoT/ EGPRS	B1/B2/B3/B4/B5/B8/B12/B13/B18/B19/B20/B26/B28/B39 - for Cat M1 only @LTE 850/900/1800/1900 @EGPRS
	SIM	Nano Sim, Plug -in 1.8 V
		SimChip
	Types of communication	Calling , SMS, GSM Data, GPRS
	Calls	Alarm call
	SMS	Alarm & Info SMS, SMS commands, requests, SMS configuration
GPRS internet connectivity	Class 12/ static & dynamic IP VPN, UDP protocol / 128bit security encryption key / FW upgrade, configuration settings, on-line value reading, report memory reading, control	
GNSS	GPS , Glonass, Beidou	33 tracking channels, 99 acquisition channels, 210 PRN channels
ANTENNAS	GPS, GSM, BT 5.0	Internal
BATTERIES	Type and capacity	Li-Ion 15 600 mAh rechargeable
CONSUMPTION	Standby	4 mAh / day
	One Trackpoint + data sending	1 mAh / each position
	Self-discharge of battery	14 mAh / day
SENSORS	3 dimensions G sensor	Movement detection / tilt detection / G-shock
	Other sensors	Temperature
WIRELESS EXTERNAL SENSOR INTERFACE	Bluetooth 5.0 long range	Range up to 100m in free space / 30m in buildings Up to 10 sensors
INTERNAL MEMORY	Flash 512 kB	Capacity 5000 events or positions
DIMENSIONS	Plastic box	177 x 85 x 25 mm
TEMPERATURE RANGE	Li-Ion rechargeable batteries	-25 °C up to +80 °C, charging +5 °C up to +35 °C
PROTECTION CLASS	IP66	Waterproof
WEIGHT	With batteries	550 g
STANDARDS	EMC	EN 50121-3-2 ed.4 EN 61000-6-4:2007+A1:2011 EN 55032:2015 EN 55024:2010
	LVD	EN 62368-1:2014+A11:2017
	Climatic testing	EN 50155 EN 60068-2-2 EN 60068-2-1 ed.2 EN 60068-2-30 ed. 2
	Shock and vibration	EN 61373 ed. 2
	IP code	EN 60529